

Scrutinizing fishery acoustic data with LSSS

Once again, the Institute of Marine Research and MAREC have joined forces to arrange a training course in the use of the post-processing system LSSS (Large Scale Survey System) to scrutinize fishery acoustic data. The course will be given at the premises of the Institute of Marine Research in Bergen, Norway. The training course is designed for scientists that will use the scientific echo sounder system to collect multi-frequency acoustic data, and the LSSS utility for data analysis.

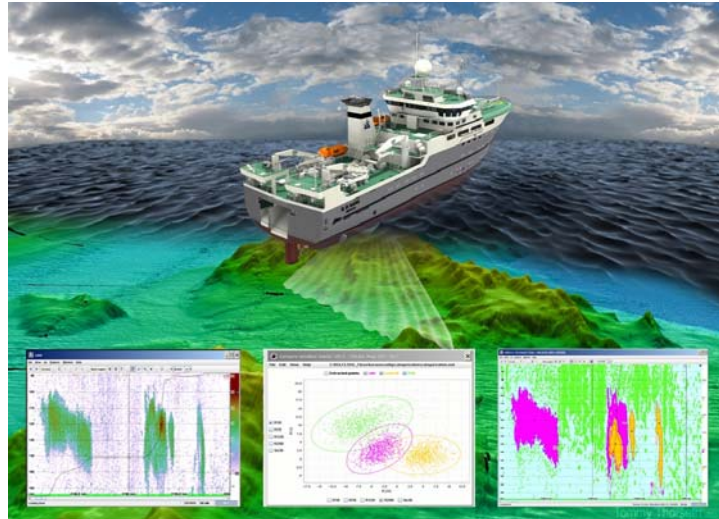
Content

Analysis using LSSS:

- LSSS basic design
- Installation, setup and customization
- Efficient data organizing
- Tools for data interpretation
- Analysis of survey data
- Data output from LSSS
- How to use manual and where to get help

Using preprocessor KORONA:

- Preprocessor KORONA design
- Data improvement through preprocessing
- Zooplankton analysis
- The acoustic feature library
- Species identification through preprocessing
- Training and un-training LSSS for species identification



Time

Tuesday 11 October – Friday 14 October 9:00 – 15:45, 2011.

Location

Institute of Marine Research, Nordnesgaten 33, Bergen, Norway in the room “Store dypet”.

Accommodation

You will have to arrange the hotel bookings by yourself. We recommend one of the hotels

- Augustin: (<http://www.augustin.no>; booking@augustin.no; C. Sundts gate 22; 5004 Bergen, Norway; tel: +47 55 30 40 00).
- Holberg: (<http://www.choicehotels.no>; co.holberg@choice.no; Strandgaten 190; 5004 Bergen, Norway; tel: +47 55 30 42 00).

Registration and fee:

The training course fee is NOK 6000. The fee includes course material and lunch. Deadline for registration is 2 September. The course fee must be paid by 16 September 2011. Please register on email to Rolf J Korneliussen using this email address: rolf@imr.no.

Laptop

We ask you to kindly bring your own laptop computer.

Travel

Recommended arrival is Monday 10 October and departure Saturday 15 October. The nearest airport is Bergen Flesland (BGO). Additional travel details will be provided directly to the participants.

Lecturers

- Rolf Korneliussen, IMR/MAREC

- Inge Eliassen, CMR/MAREC